



Contents

QuantronResonance.com

CE Compliance	Page 2
Set up	Page 3
How to Operate the Control Panel	Page 5
The Applicators	Page 9
Beginning QRS Treatment	Page 13
The Three Frequency Programs	Page 16
Cleaning, Care, and Warranty	Page 20
Troubleshooting	Page 21
The QRS Concept	Page 22
Glossary	Page 26
Technical Data	Page 27
Contra Indications	Page 28

Medical Disclaimer

Use of the QRS has been proven safe and effective in Europe and Australia. As yet, no medical claims are made or implied concerning use or application in the United States.

Disclaimer of Warranties

Our QRS team has taken care in preparation of this manual, but makes no expressed or implied warranty of any kind and assumes no responsibility for errors or omissions.

CE Compliance

QuantronResonance.com

CE Compliance

The QRS 101.4 is a mains-powered magnetic field therapy device of protection class II.

The device is in accordance with the EC directive for medical devices (93/42/EWG) and therefore carries the CE sign with the registration number of the notified body for medical devices. The according graphical symbol is placed on the type plate.

According to the Medical Device Directive (MDD), QRS 101.4 is a class IIa device.

The manufacturer is only responsible for the safety, operational reliability and functionality of the device if:

- The device is used in accordance with the operating instructions
- The electrical installation of the location where the device will be used meets the respective current requirements of electrical safety
- The device is not used in hazardous environments and humid locations
- Mountings, enhancements, re-adjustments, modifications or repair works are carried out only by personnel authorized by the manufacturer
- The operator regulation of the EC directive is observed within the scope of MDD

Technical support may be obtained by the manufacturer, dealers or service authorized by the manufacturer. The product's duration of life as scheduled by the manufacturer is 10 years.

QRS 101.4 is an electronic device. For its disposal the according regulations for electronic devices have to be observed. Incidentals have to be disposed with residual waste.

Set Up

QuantronResonance.com

Thank you for purchasing the QRS, pulsed electromagnetic fields system. The equipment has been tested in the factory before shipment. Please check the packaging to ensure that all the items have been received damage free.

The QRS package should contain:

- QRS 101.4 control unit
- Large mat applicator
- Small pillow applicator
- User manual
- Power supply chord

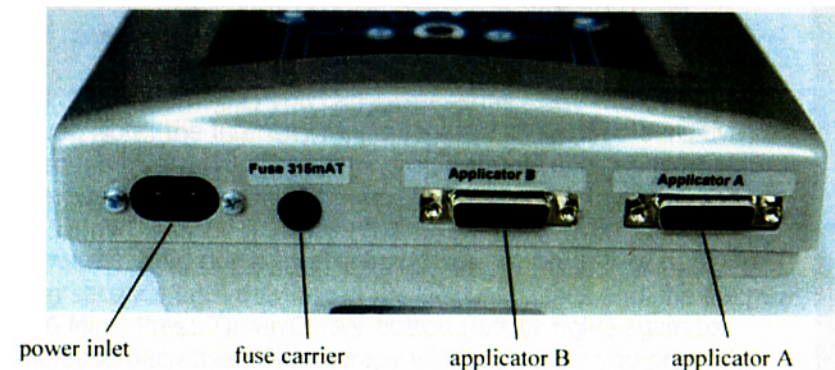
Warranties

NOTE: A two year factory warranty is automatically given by the manufacturer. Extended warranties are optional.

Assembly

Take the items out of the boxes. Note: We recommend that you leave on the plastic wrapping until your 60-day money back guarantee has ended. If the plastic wrapping has been removed you cannot return the system. If you are renting the system, do not remove the plastic wrapping. If you chose to purchase the extended warranty, be sure to immediately fill out and send in the warranty certificate(s). Check to ensure that there is no damage to the system.

Setup



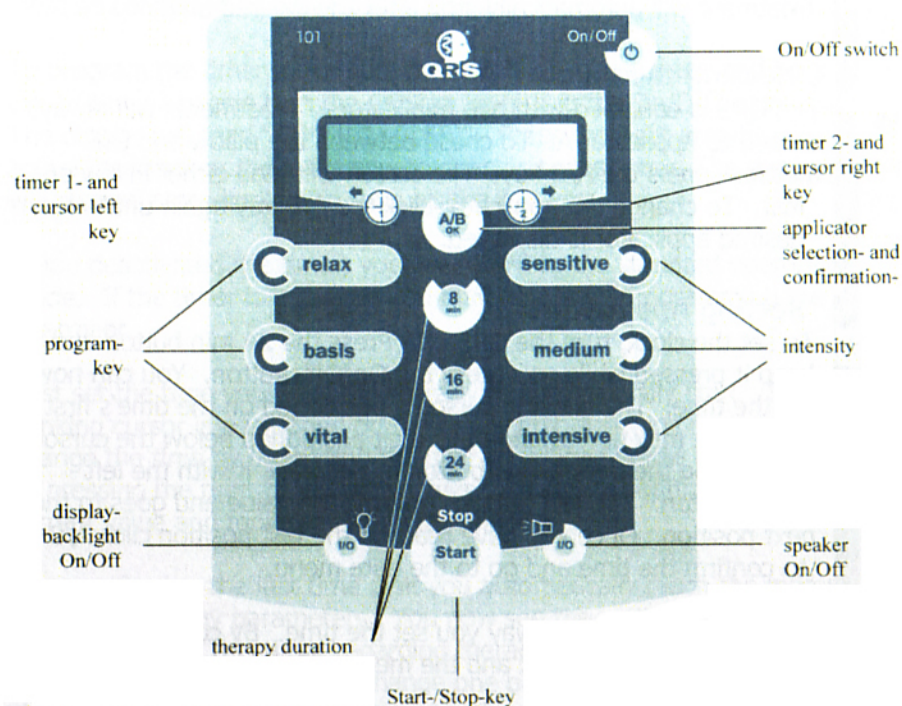
1. Unfold the Mattress and place it on a bed, sofa or recliner. The top is the end where the cable is connected.
2. Place the Control Unit so that the cable from the large Mattress or small Pillow will reach the back of the control unit.
3. For power supply, plug the power jack into a wall socket then plug the other side of the electrical chord into the socket (line), which is located at the back of the control Panel.
4. Plug the Mattress into the first socket (Applicator A) and the Pillow or Pen into the second socket (Applicator B), which is located at the back of the Control Unit.

Note: Do not expose the applicator cable to a radiator during therapy. As a rule, a distance of 3 meters is sufficient.



How to Operate the Control Panel

Description of Keys



Choosing a Treatment

1. There are three preprogrammed treatments to choose from. To chose from Basis, Vital or Relax, press the button desired.
2. Chose the intensity by pushing **sensitive**, **medium** or **intensive**. By holding the button for 2 seconds, the default intensity level will show up. By pressing the Timer/Cursor button (left or right) you can increase/decrease this default level. Note, the intensity range begins with "SE" (= sensitive) through level 1-10. The Relax program only goes up to level 5.
3. Choose time duration of treatment by pushing 8 min, 16 min, or 24 min button. To chose a different time (from 1 – 60 minutes), hold down the Timer/Cursor button (left or right) for two seconds until the time in the display flashes and show e.g. "16 Min". Press Timer/Cursor button (left or right) again to increase/decrease. The therapy will begin after you press the Start button.



The display screen will show the intensity on the left and count down the minutes left on your treatment on the right. The treatment will automatically stop after the desired time.

Selecting the Pillow



The QRS is equipped with two applicators. Treatments will always default to Applicator A. To choose between the pillow and the mattress press the A/B key. The screen will read either Pillow or Mat. To change the applicator click the A/B key again until your desired applicator is displayed.

Setting Applicators



To set the clock, turn the QRS off. Press the 24 min button and keep it pressed while you press the On/Off button. You can now set the time. The blinking cursor is positioned on the time's first digit. You may now change this digit positioned below the cursor by pressing the right arrow button or decrease it with the left arrow button. The A/B button confirms the value and goes to the next position. Once you have reached the last position click A/B to confirm the time and go to the date menu.

Set the date the same way you set the time. By confirming the last digit, the date is set and the menu will close and return to its main navigation screen.

Note:



You may leave the time and date menu at any time by pressing the stop button. By exiting this way the changes to the time/date will not be saved.

Only the European mode for time and date are available (24 hour mode and DD/MM/YY).

Timer Mode

The QRS contains two independent timers. These times serve to automatically start a therapy. The timers have to be preprogrammed and activated before their first use. Afterwards the timers will start the selected therapy every 24 hours, unless they have been deactivated.

Note:

To perform a therapy in timer mode the device may be turned off but must be connected to a live power supply.



To program the timer make sure the unit is off. Now press and hold the 1st timer key and turn the QRS on by hitting the On/Off button. The display will read "TIMER 1: [OFF]". Press the right arrow to active the timer or the left arrow to deactivate the timer. The display will change accordingly. To save hit the A/B key.

If you deactivated the timer, you will return to the standard operating mode. If the timer is activated you may now start programming the treatment.



First set the time you want the therapy to automatically start. The blinking cursor is positioned on the time's first digit, you may now change the time by increasing the digit positioned below the cursor by pressing the right or left arrow keys. Hit A/B to confirm the current value and move to the next position.

After confirming the last time digit you automatically reach the menu to set the therapy parameters. You now see the settings programmed for this timer regarding therapy program, intensity, duration, and applicator. To change one or more of these settings simply press the corresponding control key in any order.

Should two applicators be connected to the control unit you may also change the applicator with the A/B button. After the first click on this key the programmed applicator will be displayed for 1/5 seconds. The respective applicator will be changed by pressing the A/B button a second time while the display is still visible – i.e. no later than 1.5 seconds after the first click.

Programming the timer is concluded by pressing the Stop or On/Off key. In both cases all previously set values will be saved for this timer. By pressing the Start key the device will be set to the operation mode.

Note: A small green light attached to the mat and pillow will blink during treatment, showing the pulse rhythm of each program.

Note:

If the QRS control unit with an *activated* timer is taken out of the power supply and reconnected later, the device will switch on by itself, display the text "AUTOMODE" and switch off again.

How to program Languages

Turn the QRS off. Hold the A/B button and at the same time press the On/Off button once. To choose a language, move the brackets around the language you chose using the right arrow button. Press the A/B button to confirm the current selection and exit.

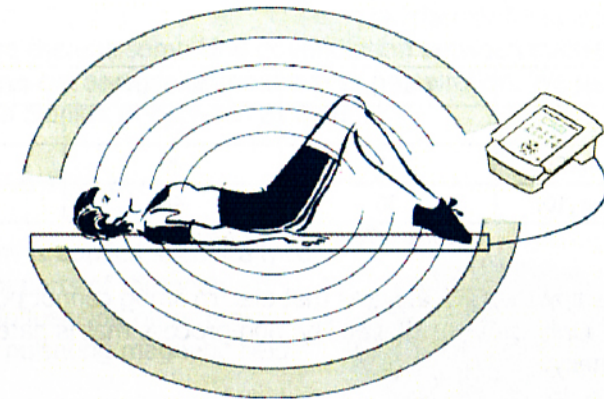
The following languages are available: [DE] German [EN] English [FR] French [IT] Italian [Spanish].

Turning the Display light on/off

The display's backlight may be turned on or off. If it is turned on the light stays on during the whole treatment. If it is turned off the display light will turn off after 1.5 seconds. The backlight status may be checked by simply pressing the light key.

Turning the speakers on/off

When the therapy is done, there is a beeping sound to alert the patient. To eliminate the beeping noise press the sound button.



Mattress, Pillow and Pen Applicators

The QRS control unit generates, through the copper coils in the mat and pillow, a pulsed electromagnetic field of the body's own frequency pattern with exactly defined waveform. The field strength corresponds to the biological windows of humans. To achieve an optimal effect the field strength was designed to be variable, because the electro sensitivity is subject to variations depending on the health of uses and the acidity of the blood. The field strength or intensity of the magnetic field can be chosen in three steps, Sensitive, Medium and Intensive.

The control unit automatically switches off after the desired time. Treatment with the QRS pulsed electromagnetic field triggers positive effects on the human organism which continue for up to 8 hours. To vitalize and stabilize good health in healthy people we recommend 2 treatments per day, about 6-8 hours apart.

One of the applicator specific characteristics is the corresponding magnetic flux density, especially regarding the setting of a definite intensity on the control unit. For your information the following table states the magnetic flux density in micro Tesla (μT) – measured directly at the applicator ($\pm 10\%$ tolerance) – for the three most common applicators.

Magnetic Field Intensities

Level	Mat (μT)	Pillow (μT)	Pen (μT)
Sensitive (SE)	.3	.4	.15
Medium (5)	15	20	7.5
Intensive (10)	30	40	15

100 micro-Tesla (μT) = 1 Gauss

During therapy the QRS ensures that electro smog cannot pollute the body. Only QRS has this ability, and process that is patented internationally.

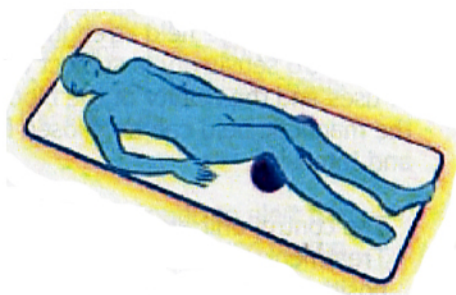
Note:

The Mattress and the Pillow or Pen (optional accessory) cannot be used at the same time. When you turn the Control Unit on, it defaults to Applicator A for the large Mattress. To use the small Pillow (Applicator B), press the Pillow button on the Control Unit with the arrow facing up.

Mattress Applicator

The coil mat creates a magnetic field of different strength depending on the control unit settings. For the Sensitive setting the magnetic field strength is about 0.3 (μT), for level Intensive the magnetic field strength increases up to 30 (μT). The magnetic field is distributed over the whole coil mat uniformly. The field range is 2 feet sideways and 4 feet directly above the mat. The body is embedded into the magnetic field and penetrated uniformly.

During the application of the coil mat as well as the coil pillow please make sure that no sharp items are pressed into the mat. The system should not be subjected to direct sun and be protected from frost. The coil may also be placed below a mattress or overlay not thicker than 20cm. In this case the magnetic field strength (intensity) must always be increased.



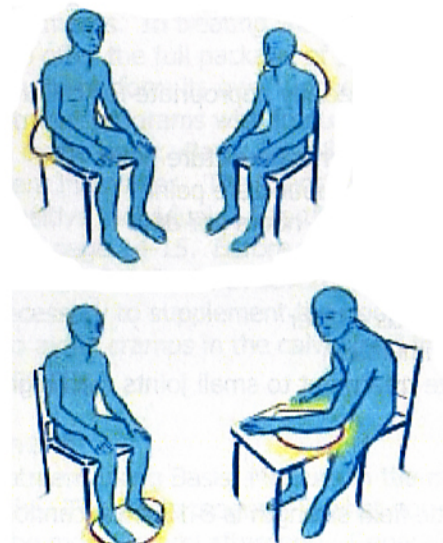
Make sure there is some kind of ventilation between mattress and mat to prevent bacteria or mold due to perspiration. We recommend to place a blanket in-between as a buffer.

Pillow Applicator

The pillow is applied specifically to individual parts of the body without influencing other regions with the pulsating magnetic field.



The magnetic field effectively spreads up to 2 feet sideways and up to 4 feet vertically which means that people in the immediate proximity during treatment will receive a gentle stimulation.



Pen Applicator (optional)

The Pen Applicator is an additional accessory available to use in Appl. 2 of the QRS Control Panel. The Magnetic Field Pen Applicator generates a cone-shaped magnetic field from a point source with the highest field intensity at the tip of the pen.



Applications

Local application: preferably at small joints (finger, jaw, elbow), in the case of localized pain (tennis elbow) or in the case of indications in the head area (eye, ear, jaw and nasal cavity)

Acupuncture

The pen applicator is especially appropriate for children and adults with a fear of needles.

Stimulation: 60 seconds per acupuncture point

Sedation: 3 minutes per acupuncture point

Maximum therapy time: 1 ½ hours per day

Advantages

- Deeper action e.g. as a laser
- Longer lasting stimulation
- Able to centralize treatment to small joints with highest magnetic field strength

Disadvantages

- Drop off magnetic field strength is 8-15 cm – cannot treat large surface

Use of the QRS has been proven safe and effective in Europe and Australia. As yet, no medical claims are made or implied concerning use or application in the United States.

Note:

The QRS system introduces electromagnetic frequencies into the body, which will for example increase blood circulation and improve cell metabolism. These fields are low and harmless. During the treatment people might experience a mood of relaxation and slight increase in body temperature. In most cases there are no immediate physical changes with the first treatment. Depending on the sensitivity and condition of the person, improvements could be noticed between 4-8 weeks. Before your treatment drink 8oz of water to assist the release of toxins in your body. In the first two weeks of the treatment, you might notice an increased odor and darkened color in your urine.

Let's Get Started!

We suggest you begin with an 8 minute treatment for your morning and evening treatments. In treating with electromagnetic frequencies it is necessary to offer the full package of personal frequencies that support the body to perform its own functions on a cellular level. The QRS has 3 treatment programs with frequency windows created for specific actions in the body: Basis, Vital & Relax. Additionally, there are three different intensities. The "Sensitive" button is available for children and sensitive individuals. See the "Sensitive To Magnetic Fields" section on page 14-15. Before you begin treatment determine if you are sensitive to PEMFs. With several daily applications of QRS it is absolutely necessary to supplement the body with magnesium and a lot of water to avoid cramps in the calves and to improve the elimination of toxins.

Daily Treatment

Begin daily treatment using Basis, Medium in the morning and Relax, Sensitive at night. The Basis program is what you will be using most of the time in the morning and afternoon. Generally, the Relax program is your evening setting before bedtime. Vital settings may be used on an as needed basis. If you are in pain, use Basis, Intensive while lying on the full body mattress and then follow with the small pillow wrapped around the aggravated area in the afternoon or early evening for 16 minutes each.

Note: Preparation of treatment: It is not necessary to remove clothing, credit cards, or jewelry before applying QRS treatment. Place the QRS on a comfortable spot, i.e., a bed, sofa or chair. It is recommended to drink water before or after treatment to assist both the release of toxins in the body and ion transport. If there is a feeling of anxiety or rapid heart palpitations, do not feel alarmed, simply decrease the setting or reduce the treatment time and proceed slowly.

Sensitivity to Magnetic Fields

Sensitivity to magnetic fields can be expected under the following circumstances:

- Individuals who are exquisitely sensitive to medications, say they cannot tolerate any medications and/or are allergic to a wide range of substances -- whether foods, medications or environmental conditions, such as severe seasonal allergy;
- Individuals who say they are sensitive to other electrical fields, such as computer terminals, televisions, cell phones or other electronic equipment;
- Individuals who are significantly depleted energetically, such as those with recent prolonged hospital stays, protein depletion, adrenal insufficiency, on many medications, extensive infections or sepsis, and possibly multiple trauma;
- Healers who are very sensitive to energy fields;
- Those with significant environmental toxicity, including but not limited to, heavy metal poisoning, such as mercury sensitivity, and multiple chemical sensitivities;
- Those who are very anxious, nervous or worriers and psychologically dependent or very sensitive;
- Individuals with excessive "hot" problems, such as extensive skin inflammation, infection or urticaria, or high fevers, i.e. they don't like to be touched;

- Individuals with extremely-heightened nervous system sensitivity, such as manic or hypomanic states, active mental instability or;
- Reflex Sympathetic Dystrophy (RSD).

We recommend the following treatment options for sensitivity. First option: Use the [Sensitive] button with either [Basis], [Vital] or [Relax]. Second option: Decrease the duration of treatment on the [Basis] program. Suggested duration is 2 minutes and slowly increased to 8 minutes. Only then should setting 2 be started and progressed in the same way. Third option: Permeate a glass of water with the electromagnetic field imprint. Simply place a glass of water on the Mattress Applicator, and leave it for 8 minutes on setting the Sensitive setting of the [Basis] program. Drinking this water throughout the day will help sensitive people acclimate to pulsed magnetic fields. Also, grape seed extract at 500 milligrams twice per day, can be used until the body is less sensitive, as an antioxidant or free radical scavenger.

International investigations and user results have not found any detrimental side effects with the use of electromagnetic fields. In its regulation, the World Health Organization (WHO) considers a magnetic field strength of up to 100 micro-Tesla at 50 Hz as safe. QRS101 magnetic field strength is 40 micro-Tesla.

The Three Frequency Programs

QuantronResonance.com

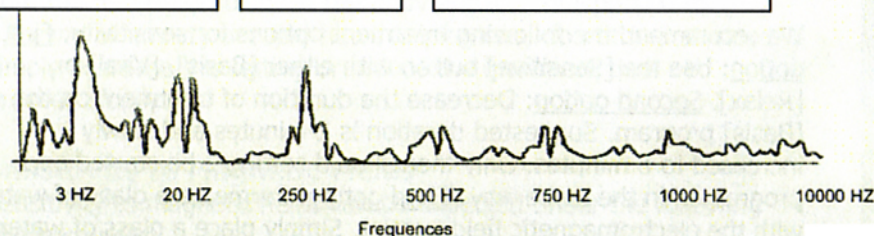
QuantronResonance.com

Frequencies Chart

Stimulation of
Circulatory System

Transport
of Ions

Biochemical Reactions,
Muscle Activity



1. BASIS PROGRAM

3Hz, 22Hz, 500Hz, 750Hz, 1000Hz dominant frequencies present, 1000Hz through 10,000Hz subtly underlying the other frequencies.

The Basis program focuses on ion-transport, especially protons into the cells, thus stimulating cell metabolism & cellular communication. Red blood cell separation is also stimulated.

2. VITAL PROGRAM

0.1Hz, 10Hz, 22Hz, 250Hz, 500Hz, 750Hz dominant frequencies present, 750Hz through 10,000Hz subtly underlying the other frequencies

These frequencies focus on activation of nitric oxide and oxygen to blood, tissues and cells.

The Vital program is very similar to the Basis program. What action is most prominent with these frequency windows is the activation of the Nobel Prize awarded discovery, oxygen carrier molecule, nitric oxide. The Vital program positively influences vitality and attention and reduces sensitivity to weather changes.

3. RELAX PROGRAM

0.3Hz, 1.5Hz, 3.0Hz dominant frequencies present 3.0Hz through 1000Hz subtly underlying the other frequencies

These frequencies focus on activating the parasympathetic nervous system.

The Relax program only has magnetic fields strengths sensitive and medium available for use. This program will positively influence deep relaxation, immune system stimulation, insomnia, and stress reduction as well as red blood cell support for oxygen transport.

Possible Responses to Treatment

Some people do not feel any sensation during the treatment, even at the highest intensities and for long amounts of time. In this case, the intensive setting can be used without hesitation. Others may feel calmness or drowsiness and increased warmth to the body with increased circulation. Other responses may be slight tingling in the body, relief from discomfort, immediate relaxation, deeper and clearer breathing, and pain relief. Chronic conditions may need more time to see visible changes.

- In the event of allergic reactions to the synthetic fabric, always cover the applicator with non-allergenic fabric or paper.
- In the event of an increase in blood pressure, as has occasionally been observed in the initial stages of QRS treatment, lower the field strength. Possibly reduce the duration of treatment to 8 minutes and then gradually and slowly increase it again.
- In the event of dizziness, which too can happen initially, lower the field strength and/or reduce treatment to once a day.
- In the event of chronic diseases an initial worsening can happen. Continue the treatment. Biological initial worsening is a sign for incipient reactions and/or the loosening of blockages in the body. A second worsening can occur again after several weeks of QRS treatment. Both duration of treatment and field strength should be reduced and then slowly increased again.
- In the event of sensitivity, please read pages 14-15
- It has been shown that in many cases of medication there were short-term effects after using QRS due to the added efficiency of QRS treatment. The physician should observe the QRS user closely and reduce the medication gradually until no longer needed.
- If body temperature rises to 100 degrees Fahrenheit, cease QRS treatment; otherwise improved circulation will potentially increase body temperature further.
- It has been observed that headaches were caused by the use of QRS even in non-migraine patients. If sufficient water is consumed the tension in the head will ease rapidly. A lower level on the Control Panel is also appropriate. Especially in the case of migraines the patient should lie quietly, the

applicator should only reach up to the shoulder and not lie under the head, treatment should be 3, 4, or even 5 x 8 minutes in a row on setting Basis sensitive until a light relaxation is experienced. Then it should be stopped immediately to let the process of self-healing progress.

Please read the "DETOX-Understanding the Healing Crisis" document to prepare you in the event of detoxification discomfort while working toward restoring your body to a healthy state.

Advice Concerning Treatment of Babies & Children

Adult supervision is necessary with babies and children under the age of 12 when using the QRS. The small Pillow is recommended for treatment of babies. In addition, using the large Mattress, babies and children may lie on an adult's chest or abdomen. Babies should only be treated on the sensitivity setting. Children ages 2-12, should only be treated with the Medium setting.

Protection from Electromagnetic Pollution

Each time QRS treatment is applied, potentially harmful electromagnetic pollution (from high tension power lines, computers, mobile phones, televisions, etc.) encountered since last using the QRS is neutralized. This is achieved by the patented hardware built into the QRS device. Neutralization occurs each time QRS is used.

European patent EP0594655

PCT-WO 94/11062

Cleaning, Care and Warranty

QuantronResonance.com

Please unplug the QRS before cleaning. Do not immerse the Control Unit, Mattress, or Pillow in water. Use a damp cloth with a mild household cleaner to wipe and clean the QRS. The Pillow should only be bent in the middle. Be sure to keep sharp, pointed objects away from both the large Mattress and small Pillow. Do not expose the system to direct sunlight and protect it from frost.

Placing Mat under a Mattress

The mat can be placed under a mattress that is not thicker than 20 cm. In such cases the applicator should be set one setting higher, e.g. setting Medium instead of Sensitive. A wool blanket should be placed between the mattress and the mat in order to avoid undesirable bacteria or fungi caused by sweat.

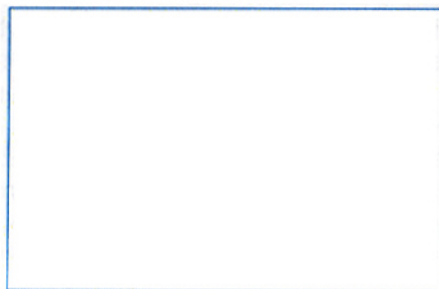
Warranty, maintenance and repair

No special maintenance or inspection is necessary. Warranty claims can only be guaranteed if the warrantee is received 30 days from purchase.

The QRS system is a high quality system made in Germany and is ISO 9002 quality assured. The product will give many years of trouble free service if treated properly. The warranty does not cover accidental or non-accidental damage.

Prior to seeking a warranty claim, please follow the procedures contained in the Troubleshooting section of this manual.

When returning the product for repair, please ensure that it is well packed to protect it from damage during transport. Remember to insure it prior to shipping. Please contact tech dept. before you return your unit. Repairs should be mailed to the address below.



Troubleshooting

QuantronResonance.com

Before contacting Quantron Resonance Systems to seek repair, please follow the procedure for fault finding. Your QRS product is high quality German equipment that is not likely to fail.

Error Situations

Symptom	Cause/Remedy
The device cannot be turned on, the display stays dark and empty.	Please check if the socket is plugged in all the way. Check that the outlet works by testing another appliance in the outlet. If the outlet is working the fuse may need to be replaced. Before replacing the fuse please contact your service representative. The fuse is located in the fuse carrier in the back of the control box. The fuse is accessible by gently pressing the fuse carrier toward the device and turning it about 1/8 of a turn counter-clockwise. Replace the fuse with a new one with the same voltage (found at nearest hardware store).
A permanent alarm signal resounds after connecting the device to the main power supply.	The control unit's program memory has the wrong content. Please contact customer service.
The small green light attached to the mat or pillow applicator is not blinking after starting a treatment program.	There is a malfunction on your applicator(s). Please contact customer service.

The QRS Concept

QuantronResonance.com

"The QRS allows the body to recover its self-healing capabilities"

Dr. G. Fischer PhD from Liechtenstein (Europe) developed the QRS in 1991 in cooperation with international scientists. The concept of the QRS is patented worldwide.

Metabolism and resonance

The QRS is the result of more than 20 years of fundamental and applied research by leading international scientists. A dramatic breakthrough has been achieved with this system in the sphere of magnetic fields treatment, as the QRS improves cell metabolism by emitting low frequency magnetic fields. The QRS creates a resonance/vibration similar to those of the body's cells. Through resonance, electromagnetic field frequencies transfer energy. It is QRS' creation of a range of frequencies, which appeal to the body's own natural frequencies combined with the energy transfer mechanism of field resonance that produces the desired healing effect.

Recharging the cell

Increasingly, people have been asking for a more holistic approach to health maintenance and scientists have been focusing their attention on the beginnings of the disease process, rather than on alleviating the symptoms. Poor health and dysfunction ultimately begin at the cellular level of the human body. Ultimately it seems we are only as healthy as our cells are.

It is estimated there are around 70 billion cells in the human body. Through normal wear and tear, billions of them must be regenerated every minute of the day and night. We are now familiar with the concept that ultimately everything is energy. We see this demonstrated by both the electrical and magnetic components basic to functioning of the human body. A healthy human cell has a charge of 70 to 90 millivolts, but the charge in unhealthy cells can be as low as 40 millivolts. At that level, the cell is unable to carry out its complex metabolic functions. It is difficult for an unhealthy person to restore this cell energy in our modern day society. We have sedentary lifestyles, poor nutrition, are mentally and physically stressed and live with the interference of the man made high frequency magnetic fields of cell phones,

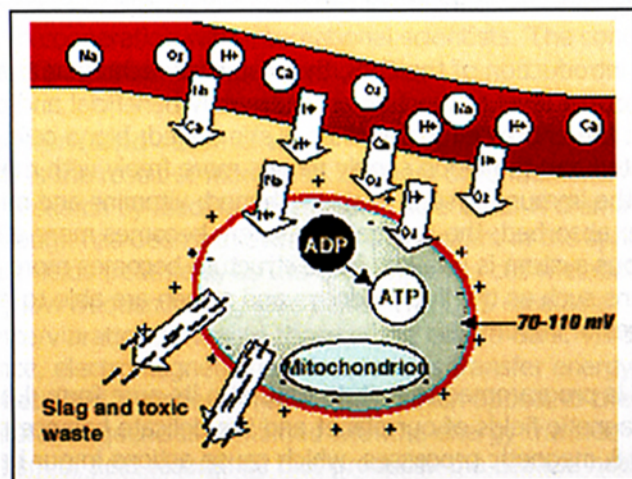
QuantronResonance.com

televisions, computers, power lines, etc. This unnatural high tech environment interferes with the sensitive balance of the electromagnetic components of our bodies and cells.

With the introduction of the QRS, the results of recharging the cells to their correct level of function are extremely beneficial and often dramatic: the entire cell metabolism is stimulated: blood cells are regenerated and the blood supply moves more freely with more oxygen; the immune system is strengthened; vitamins and minerals are better absorbed; the respiratory system becomes more efficient; the nervous system is relaxed; bone structure becomes more dense and organs such as the liver, kidneys and spleen are able to rid themselves of impurities.

The QRS is programmed to imitate nature in its pure form, i.e., the electromagnetic fields of our planet and the delicate balance of the electrical & magnetic processes, which cause actions in our bodies on a cellular level. What we are seeing with the assistance of the QRS is the power of the body to reclaim its natural state of health once cell energy is restored. One of the best parts is that there are no side-effects. In addition, the QRS compliments other forms of treatment such as medication, treatment, or surgery.

QRS works on the cell metabolism of the human body.



QRS restores membrane potential, opens the membrane pores, increases oxygen and nutrients and removes waste. ATP is a compound rich in energy. It is formed in the cells by combustion of nutrients. It serves as an energy supplier for chemical reactions and other cell functions in the body.

Once the cell has created the energy to function, 50% of this energy is used for ATP production and 50% for maintaining cellular membrane potential.

These are effects that have a positive influence on the cell metabolism. The magnetic field of the QRS fully penetrate the body and cells and reinforces weak functional cycles in a natural way. This allows the body to recover its natural self-healing ability.

Using QRS treatment cannot create too strong a field as it works with a maximum average of 15 micro-Tesla across the Mattress Applicator. The World Health Organization (WHO) considers a constant load per 24 hours of 100 micro-Tesla as safe. The international scientific

community is in agreement that pulsed electromagnetic fields of this strength cannot cause detrimental effects.

Ion Transport

The QRS is designed to transport ions, particularly protons, from intra-bodily electrolytic fluids into and through the vessel walls and membranes surrounding the fluids. Both positive and negative ions move in the same direction. It is now possible for the first time to supply targeted cells with both components of the dissociated chemical substance. The ability of the QRS signal to transport ions is a factor that sets QRS apart from other pulsed electromagnetic systems.

Neutralizing High Frequency Fields

Each time QRS treatment is applied, potentially harmful electromagnetic pollution (from high tension power lines, computers, mobile phones televisions, etc.) encountered since last using the QRS is neutralized. This is achieved by the patented hardware built into the QRS device. Neutralization occurs each time QRS is used.

For more detailed information, please visit the Website:

www.quantronresonance.com

Resonance

To manifest sympathetic vibration. Human cells each have a specific vibration. The QRS produces an electromagnetic field, which imitates and creates the same vibration as healthy human cells.

Electromagnetic field

A magnetic field created by passing an electric current through a coil of wire. Running electricity through the Control Unit and emitting a specific electromagnetic wave pattern through a coil, which runs through the Mattress, creates the patented saw-tooth QRS magnetic field pattern.

Micro Tesla

Measurement term for magnetic field strength. 100 micro-Tesla = 1 Gauss

Pulsed Magnetic Field Properties

Every pulsing electromagnetic field is characterized by the three parameters of waveform, frequency and field strength.

Waveform: Electromagnetic forces are generated in the body by the QRS specific wave and these are responsible for the optimal level for transport of ions.

Frequency: Everything that exists has a vibration, including every atom, molecule and thus the human cell. The QRS uses the frequencies of the body itself, which are generated through movement. The concept on which the QRS was based was that humans carry a symphony of frequencies in the body. By treating the person through electromagnetic fields, it is necessary to offer the full package of personal frequencies that support the body to perform its own functions.

Field Strengths: Because the system is using the body's own frequencies, only small field strengths have to be used. The QRS works with average field strengths between 3 and 30 micro-Tesla. Even the field strength of the earth is greater (50 micro Tesla). This is why there are no side effects from using the QRS.

Hertz

Measurement term for quantifying electro/pulsed magnetic frequencies.

Cellular Metabolism

The entire sum of all physical and chemical processes is constantly taking place in human cells. This includes those, which use energy to build up assimilated material (food, oxygen and water) and those, which release energy by breaking down these substances.

Transmembrane Potential

The electric voltage of the outer layer of human cells. In a healthy cellular environment the transmembrane potential is between 70-110 mV (millivolts). In a state of disease the cells of the human body drop their voltage under 70 mV, thus causing a sluggish metabolism. The QRS assists in raising and maintaining the cell transmembrane potential to 70-110 mV.

Control Panel Model QRS 101

Mains voltage, frequency and power consumption	115/230V, 50/60 Hz, 7W
Power consumption in stand-by mode:	Maximum 800 mV
Fuse	315 mA slow blow
Temperature during operation	50°F to 100°F
Storage temperature	40°F to 120°F
Applicator connection	15 – pole jack
Safety grade	II
Safety precaution:	BF (for electric shock)
Intensity levels:	Sensitive, Medium (5), Intensive (10), 1-10
Application duration:	8 minutes (automatic switch-off) 1 to 60 minutes adjustable
Application current reverse:	Every 2 minutes
Application end:	Automatically after set time or manually with stop key
Application current:	Approx. 1600mA at level 10 approx. ~30µT Approx. 160mA at level 1 approx. 3µT moving linear
Applicator A: Loops: Cover:	Mat Applicator K1 Enclosed in cotton-cretonne Vinyl and cotton-cretonne
Applicator B: Loops: Cover:	Pillow Applicator K1 Enclosed in cotton-cretonne Vinyl or cotton-cretonne
Control unit dimensions	92 mm x 190mm x 215 mm (hwxwd)
Control unit weight	1.2 kg
Control unit display	DOT-matrix, 16 characters
Magnetic field strength:	Max. 30 µT for the mat, approx. 40µT for pillow
Case	PS-Polystyrol
Manufacturer:	Magnovit International Produktions-und Handels AG, Germany

Contraindications

QuantronResonance.com

Principle contraindications where the QRS application requires the consideration of possible risks and surveillance are:

Pacemakers

Pregnancy

Epileptics are another risk group. There are neither negative, nor positive findings. Therefore to be on the safe side the application should, if used at all, be supervised by a medical specialist.